

ROOM CAPACITIES

Meeting & Banquet Facilities At Grand Cascades Lodge

Room	Dimensions WxLxH Ft	Capacity					
		Sq. Ft.	Theater	Classroom	Reception	Banquet	
Emerald Ballroom		4,300	400	200	450	360 / 310 D	
Emerald I	32'x50'x20'	1,600	100	150	200	115 / 95 D	
Emerald II	45'x85'x20'	3,825	150	150	275	240 / 200 D	
Garden Room	52'x28'x9'	1,456	100	60	100	70 / 50 D	
Garden Patio	62'x18'x9'	1,116			100	N/A	
Wedding Garden	30'x20'x9'	600	160		240	N/A	
Grand Rotunda	70' Diameter	2,500			208	140	
Chestnut Room	74'x34'x9'	2,516	150	54	150	110 / 90 D	
Napa Room	45'x36'x9'	1,620	80	66	100	80	
Restaurant Latour	34'x26'x9'	884	N/A	N/A	N/A	40	
Crystal Tavern	52'x28'x9'	1,456	N/A	N/A	30	50	
The Wine Cellar:							
The Bordeaux Room	27'x25'x9'	675	N/A	N/A	50	25	
The Grand Cru Room	22'x21'x9'	462	N/A	N/A	24	12	
The Sonoma Room	10'x12'x9'	120	N/A	N/A	10	10	
Silver Springs Room*	41'x66'x9'	2,706	200	141	150	80	*(Room can be divided)
Flora Springs Room	26'x42'x9'	1,092	100	54	130	70	
Saratoga Room	69'x33'x9'	2,297	100	63	125	110	
The Pub	35'x25'x9'	875			87		
Willow Springs Board Room	25'x28'x9'	700	45	32	60	40	
Gallium Board Room	26'x16'x9'	416	N/A	12	N/A	N/A	
The Biosphere	100'x100'	10,000			250	150	
Fire & Water Terrace	75'x50'	3,750			150		
Outdoor Chef's Garden	30'x20'	600			40	20	

Meeting & Banquet Facilities At Minerals Hotel

Room	Dimensions WxLxH Ft	Capacity				
		Sq. Ft.	Theater	Classroom*	Reception	Banquet
Diamond Ballroom	96'x72'x12'	4,200	400	222 / 178	400	300 / 240 D
Diamond Ballroom A	60'x33'x12'	1,400	100	84 / 70	150	90 / 72 D
Diamond Ballroom B	72'x50'x12'	2,800	120	102 / 82	225	150 / 120 D
Quartz Room	39'x32'x8'	1,250	80	60 / 50	75	90 / 60 D
Granite Room	39'x25'x8'	975	70	45 / 36	40	50 / 24 D
Copper Room	60'x45'x12'	2,700	200	100	225	180 / 150 D
Quarry Room	45'x33'x8'	1,485	80	60	50	80 / 64 D
Sports Court	90'x55'x23'	5,400	400	200	600	300 / 240 D
Gems		5,000	N/A	N/A	200	160
Gems' Terraces			N/A	N/A	80	60
Minerals Pavilion	86'x86'x20'	7,116	350	200	N/A	200

Meeting & Banquet Facilities At Other Locations

Room	Capacity					
	Sq. Ft.	Theater	Classroom	Reception	Banquet	
Ballyowen						
Owen's Pub	2,500	N/A	N/A	75	50	
Pavilion	3,900	100	75	200	200 / 180 D	
Black Bear						
Ballroom	4,500	500	150	250	200 / 170 D	
Patio	1,000	N/A	N/A	80	60	
Bear Den Grille	1,900	N/A	N/A	70	50	

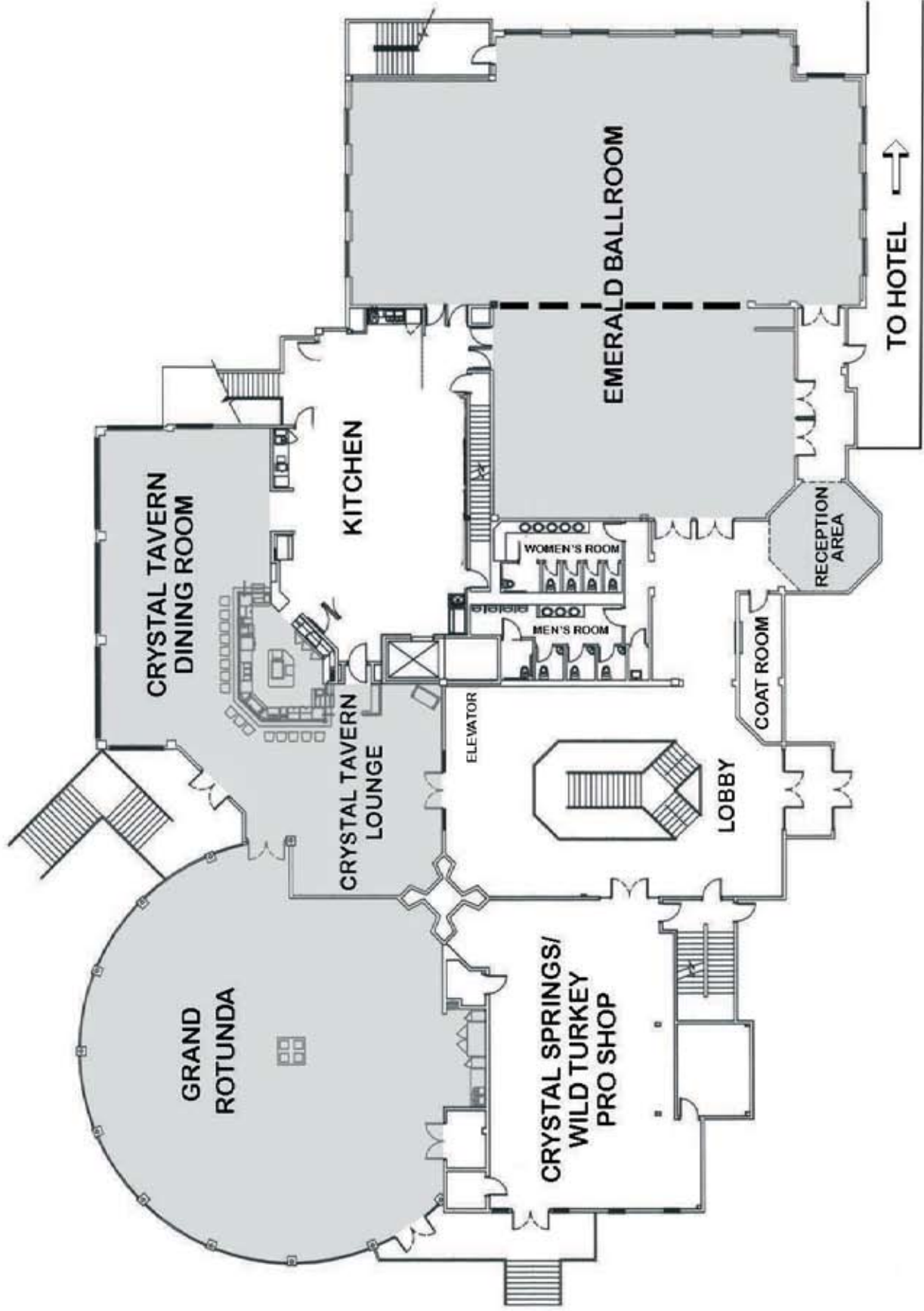
Meeting Services Available

Complete Banquet & Catering Services – The Resort's Executive Chef and his staff offer a complete selection of breakfast, break, lunch and dinner menus. Theme party, picnic and custom menus are also available upon request.

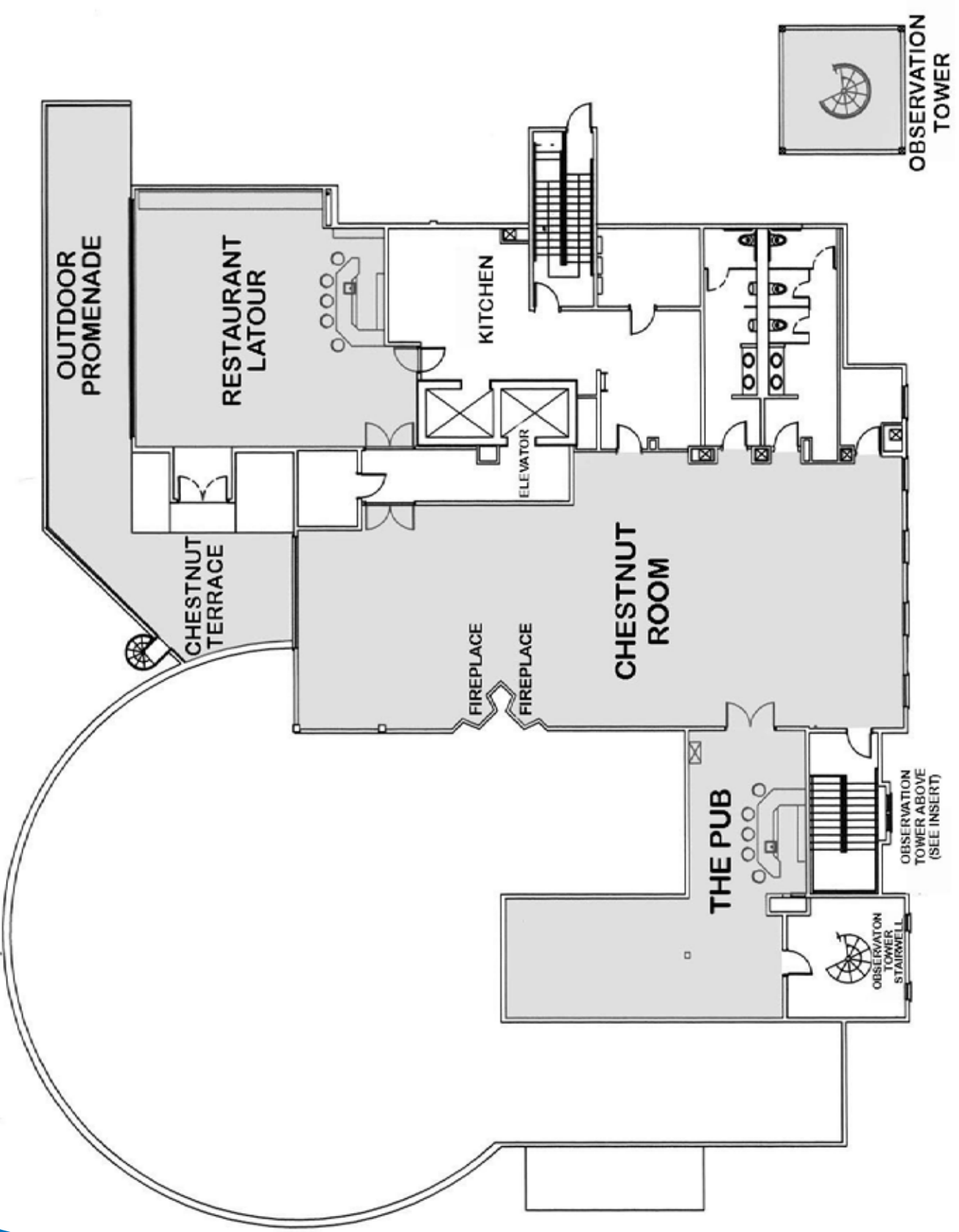
Business Center – The Business Center offers black & white and color copies, laser printouts, transparencies, stapling, collating, cutting and hole punching, incoming and outgoing faxes, work space, use of PC with Internet connection, phone ports, word processing, Internet and modem connection, shipping and office supplies.

Audiovisual Equipment – Computer with monitor and keyboard, portable computer desk, DVD, VCR, monitor, wide screen television, LCD projector, slide projector, a variety of projection screens, PA system, electric pointer, wireless microphone, lavalier microphone, dry erase board with markers, flipchart easel, podium, high speed wireless Internet videoconferencing and flat screen TVs.

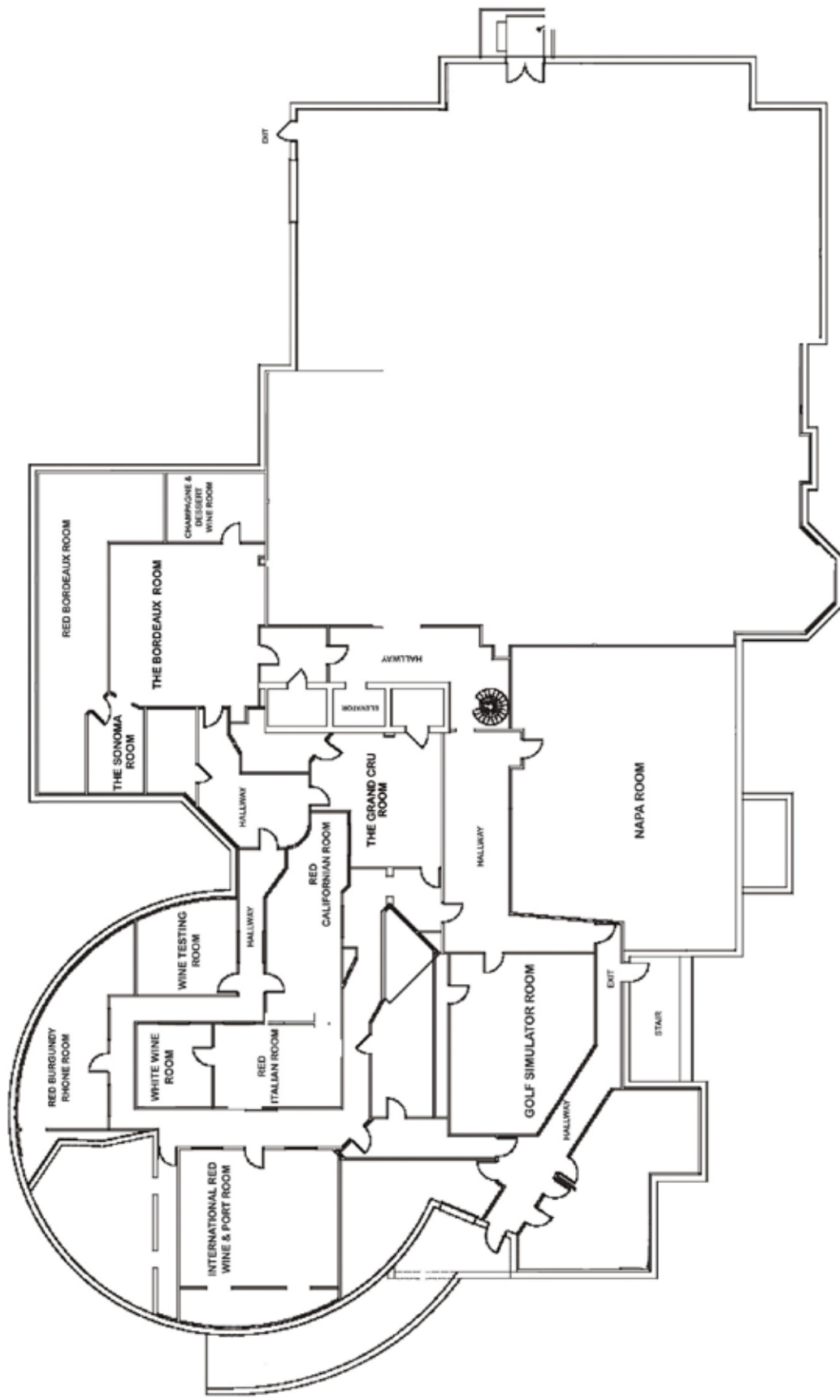
Grand Cascades Lodge Lobby Level



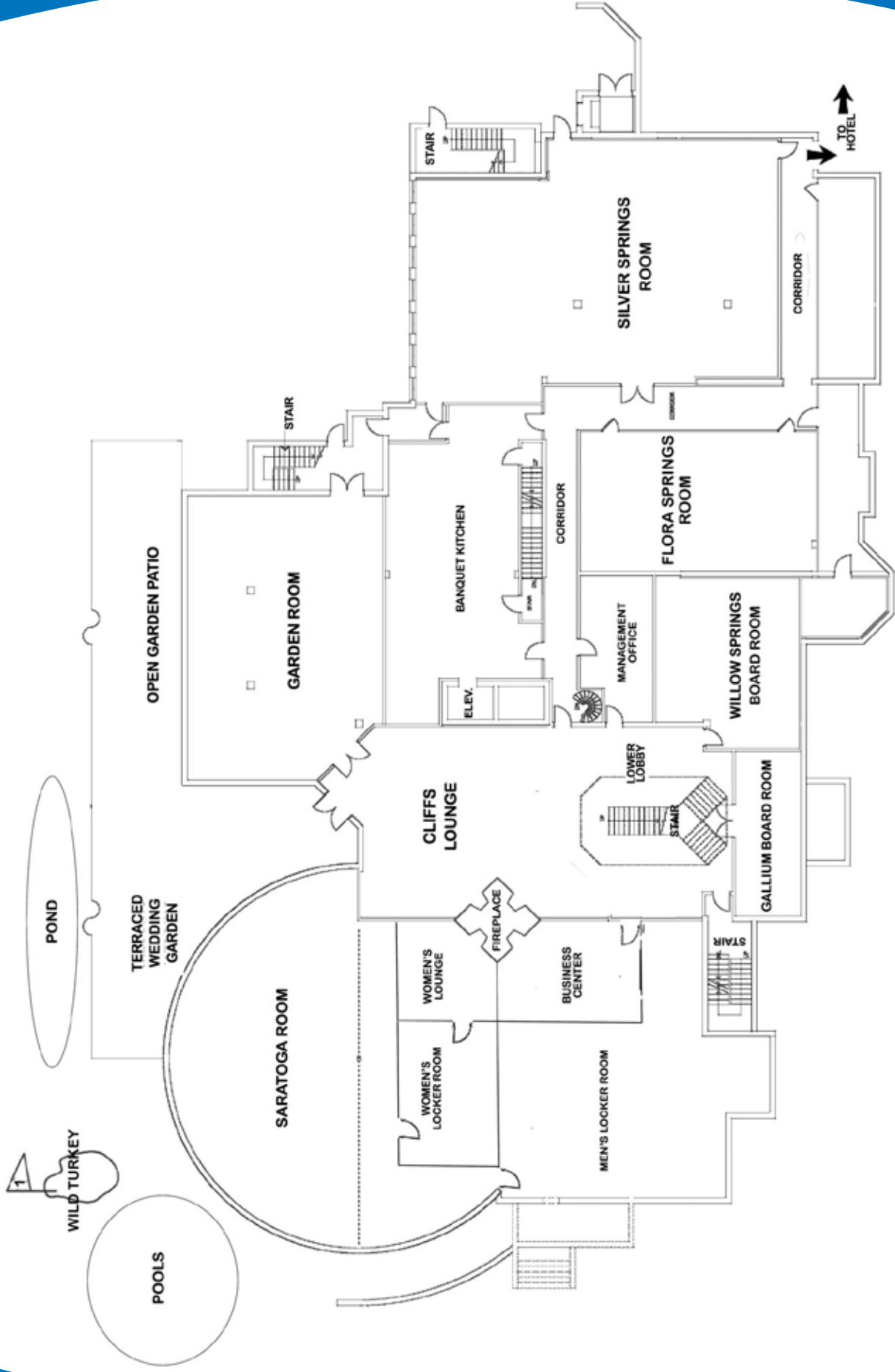
Grand Cascades Lodge Second Floor Level



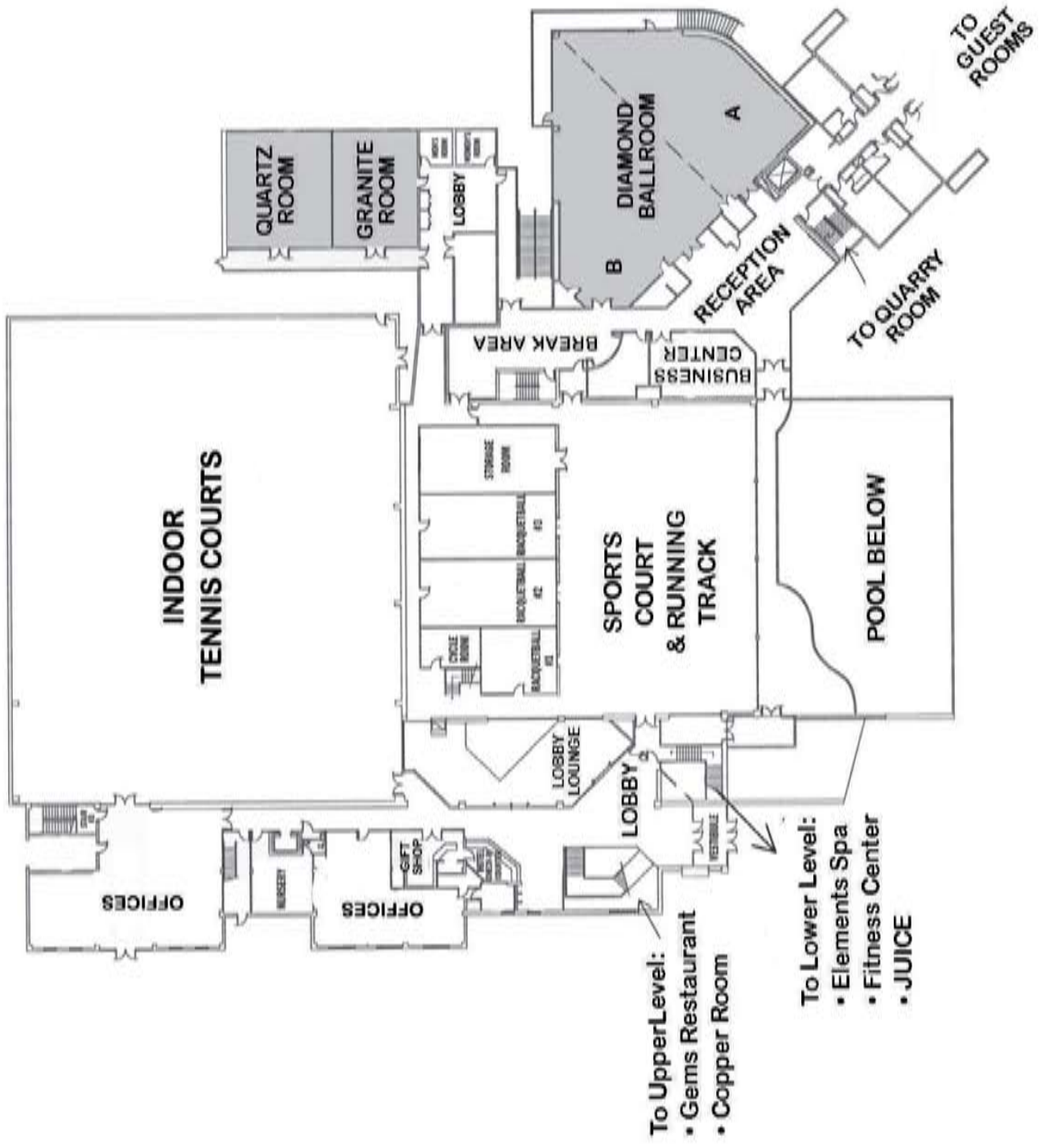
Grand Cascades Lodge Wine Cellar Level



Grand Cascades Lodge Lower Level



Minerals Hotel & Spa Lobby Level



Minerals Hotel & Spa Upper Level

